



water affairs

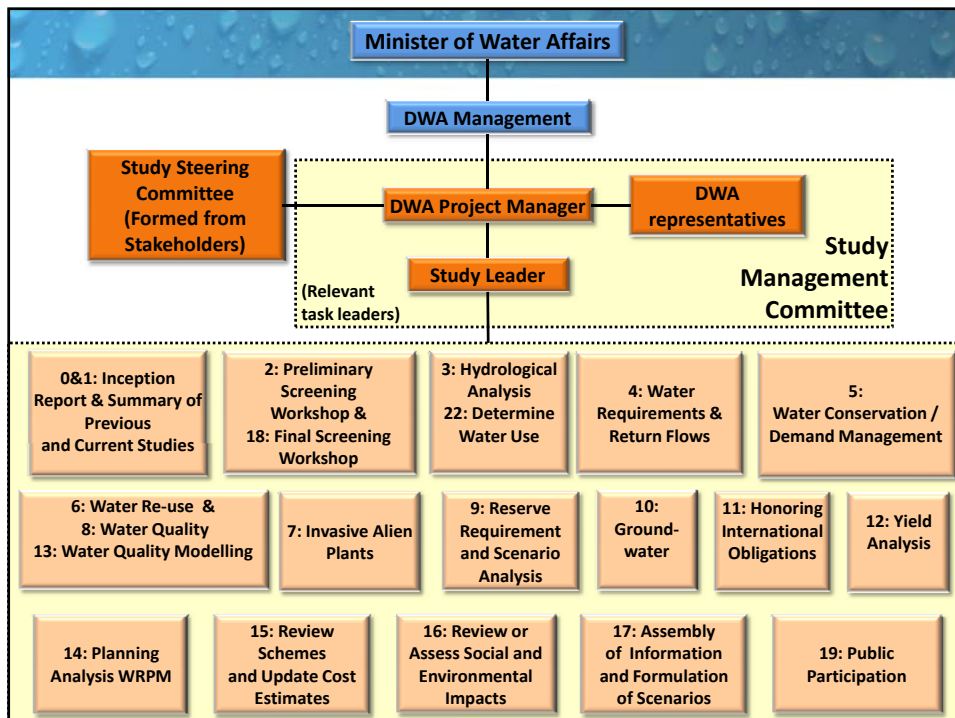
Department:  
Water Affairs  
REPUBLIC OF SOUTH AFRICA

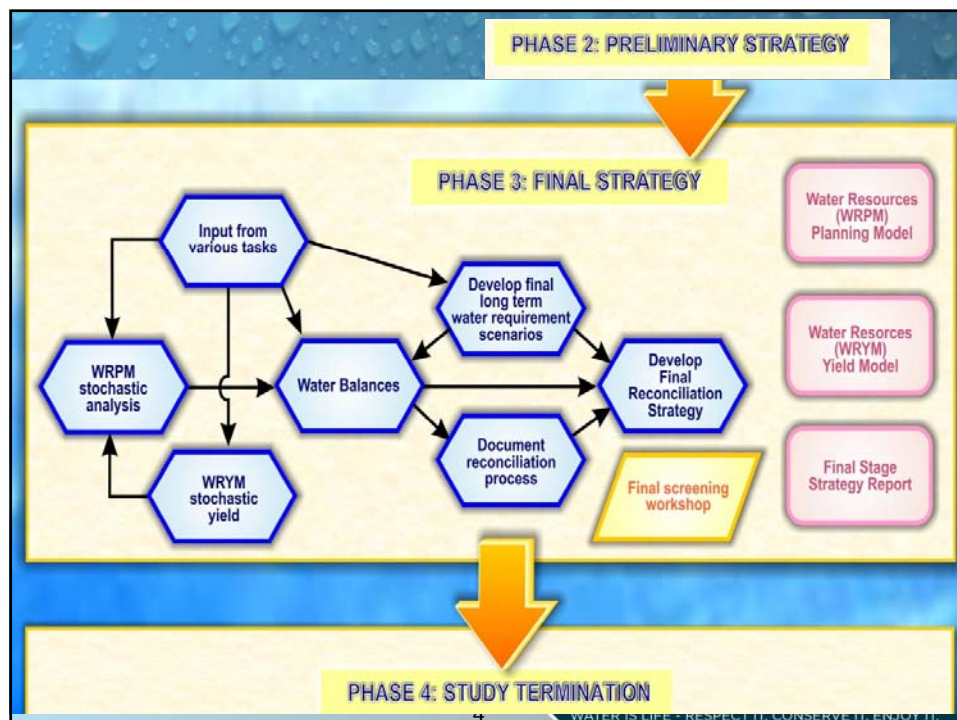
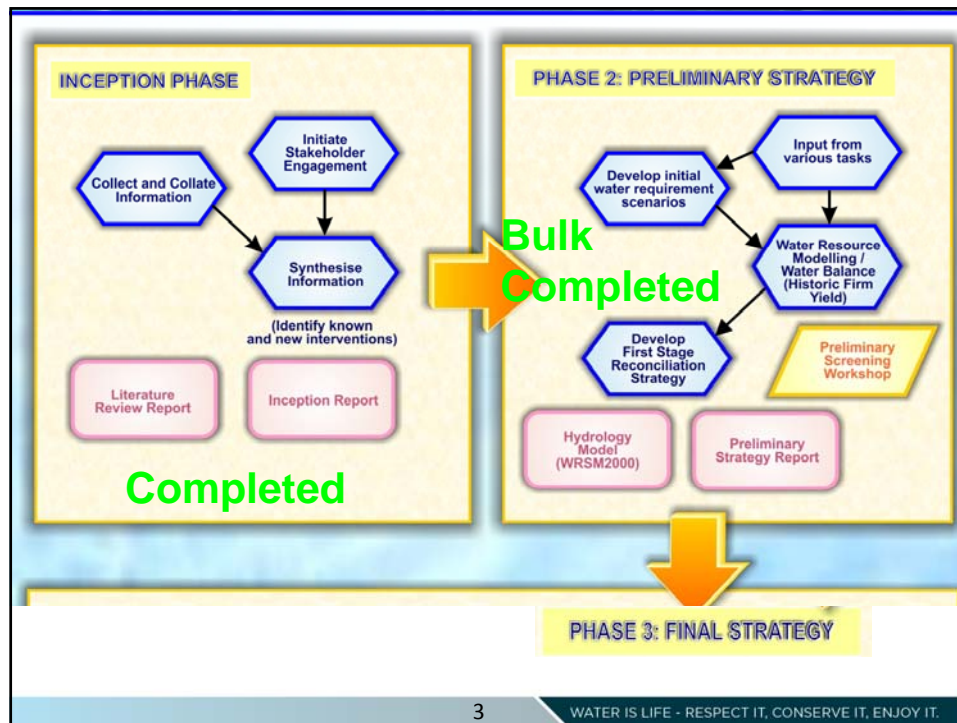
## Development of Reconciliation Strategy for Luvuvhu & Letaba Water Supply System Study Steering Committee Meeting No 4

21 November 2013

### Overview on Progress with Study Tasks (Item 8)

WATER IS LIFE - RESPECT IT, CONSERVE IT, ENJOY IT.





Study Reports			
Report no.	Name or description	Associated task	Notes
1	Inception Report	0	Final
2	Literature Review Report	1	Final
3	Water requirements and Return Flow Report(Also include a section on the International obligations)	4 & 11 & 22	
4	Rainfall analysis report	3	Final Draft
5	Hydrology report (includes IAP)	3 & 7 & 22	
6	Water Conservation and Water Demand Management Report	5	Final
7	Water re-use report	6	Final
8	Water Quality Assessment Report	8 & 3	Final
9	Groundwater utilization scenarios	10	
10	Preliminary Reconciliation Strategy (or first stage) Report	17a	
11	Executive Summary of Preliminary Reconciliation Strategy Report	17a	
12	Yield Analysis Report (Includes IAP & EWR)	12 & 9	
13	Planning Analysis Report	14	
14	Water Supply Schemes Report & Social + Envir Aspects)	15 & 16	
15	Final Reconciliation Strategy reconciliation strategy Report	17b	
16	Executive Summary of Final Reconciliation Strategy reconciliation Report	17b	
17	Demographic and Economic Development Potential	4	Final
Note: Final reports all available on study Web site			

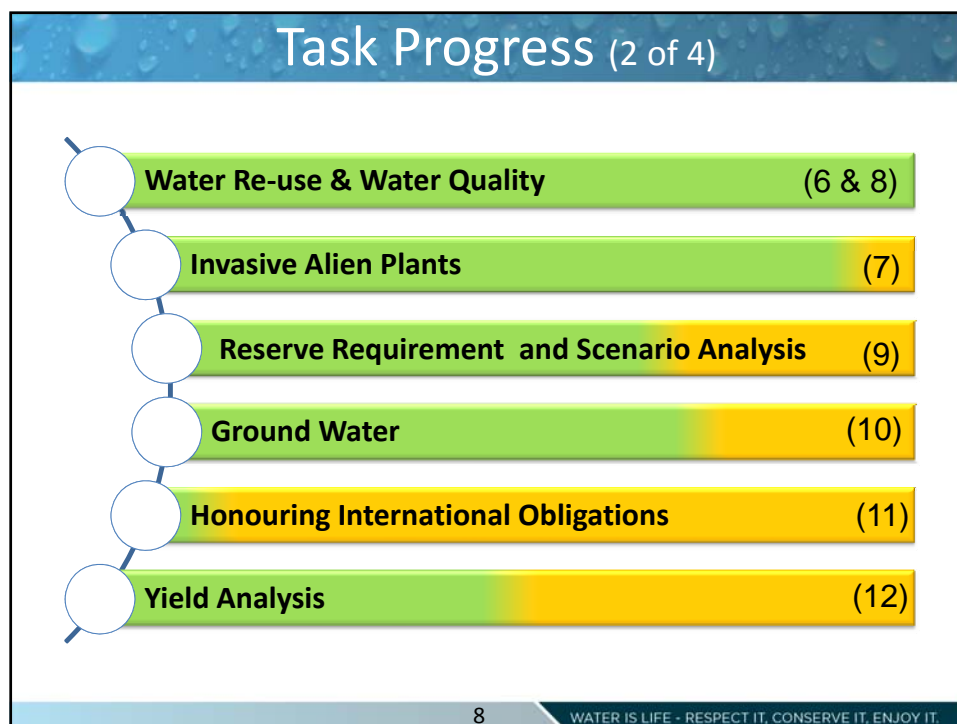
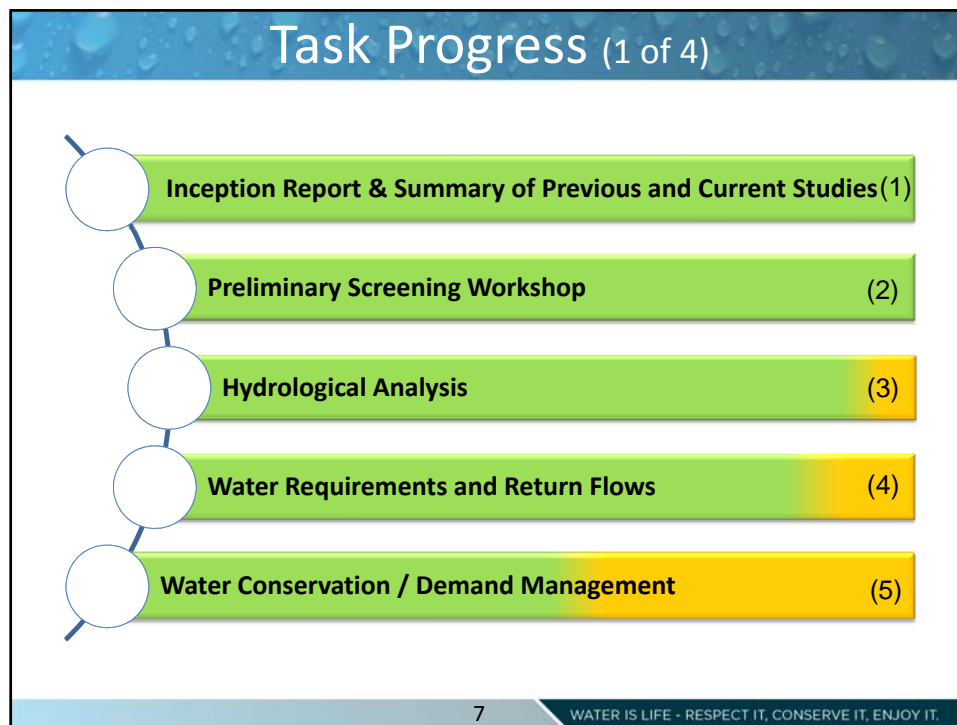
5

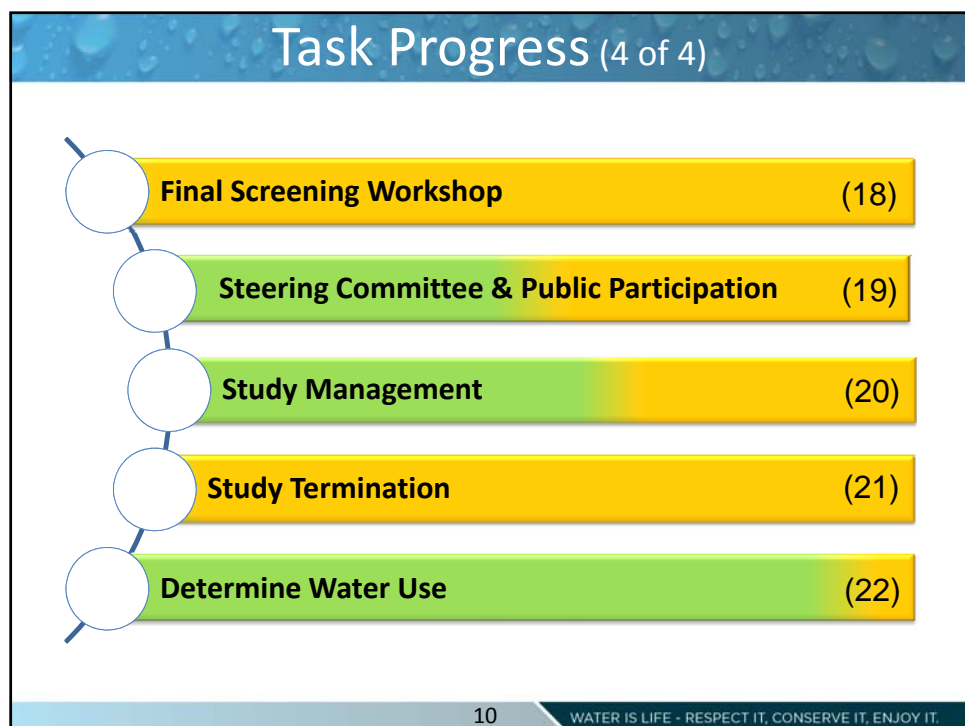
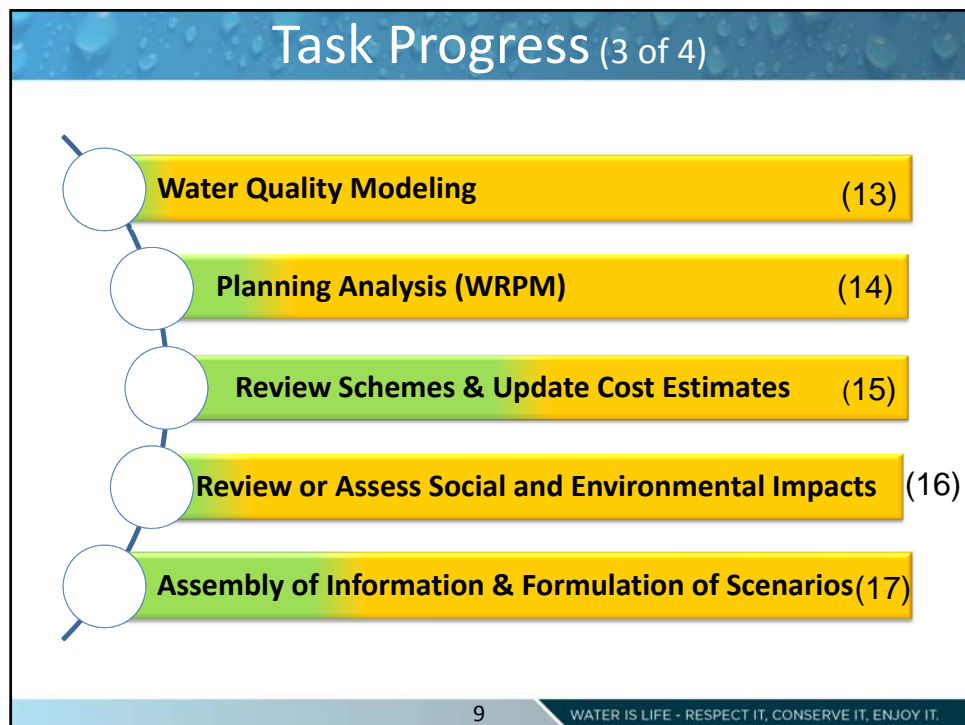
WATER IS LIFE - RESPECT IT, CONSERVE IT, ENJOY IT.

Study Tasks	
<ul style="list-style-type: none"> <li>• Inception , summary of previous and current studies (1)</li> <li>• Preliminary screening workshop (2)</li> <li>• System Analyses (3, 8, 12, 13, 14) <ul style="list-style-type: none"> <li>– Hydrological, Yield (WRYM), Planning (WRPM), Water quality</li> </ul> </li> <li>• Water use and needs (4, 7, 9, 11, 22) <ul style="list-style-type: none"> <li>– Requirements and return flows, Invasive alien plants, Afforestation, Reserve, International obligations</li> </ul> </li> <li>• Intervention option (5, 6, 10, 15, 16) <ul style="list-style-type: none"> <li>– WC/WDM, Water re-use, Schemes (surface and groundwater), Social &amp; environmental assessment</li> </ul> </li> <li>• Formulation of scenarios to inform strategy (17, 18) <ul style="list-style-type: none"> <li>– Final screening workshop</li> </ul> </li> <li>• Stakeholder engagement and public participation (19)</li> <li>• Study Management (20)</li> </ul>	

6

WATER IS LIFE - RESPECT IT, CONSERVE IT, ENJOY IT.





**Thank You**